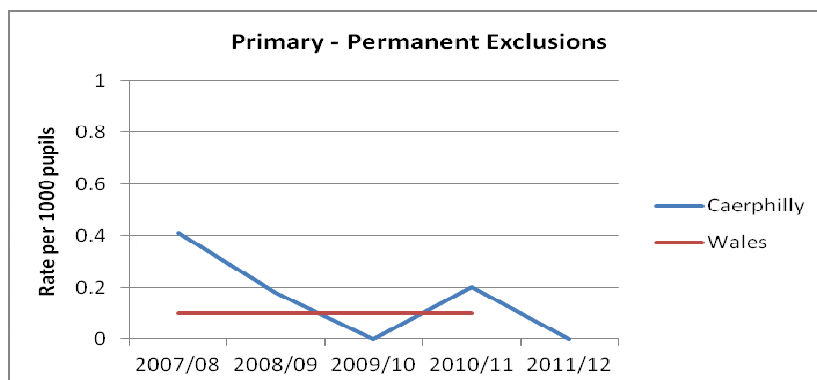


Primary

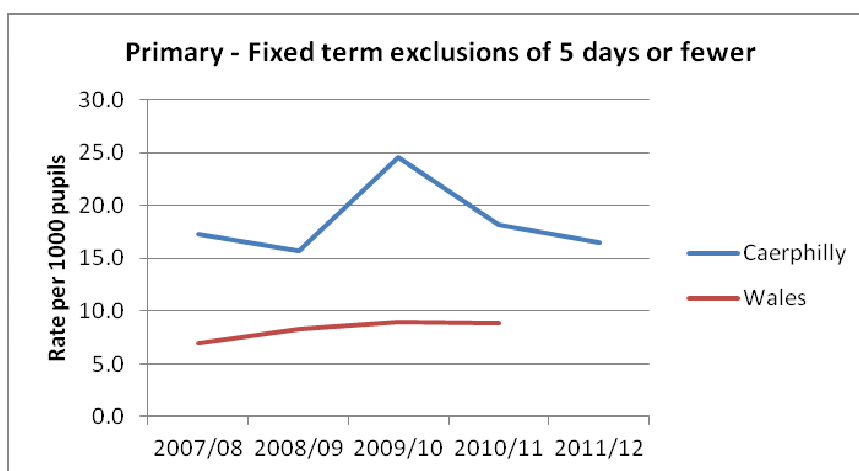
Permanent Exclusions - Primary

	2007/08			2008/09			2009/10			2010/11			2011/12		
	Number	Rate (per 1000 pupils)	LA Rank	Number	Rate (per 1000 pupils)	LA Rank	Number	Rate (per 1000 pupils)	LA Rank	Number	Rate (per 1000 pupils)	LA Rank	Number	Rate (per 1000 pupils)	LA Rank
Caerphilly	7	0.41	22	3	0.18	21	0	0	1*	3	0.2	20	0	0	#N/A
Wales	21	0.1		14	0.1		19	0.1		14	0.1		#N/A	#N/A	



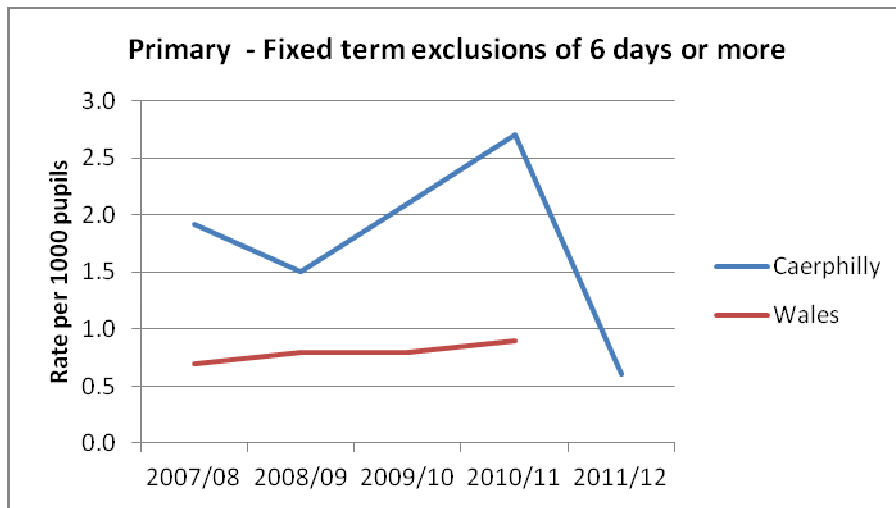
Fixed term exclusions of 5 days or fewer - Primary

	2007/08			2008/09			2009/10			2010/11			2011/12		
	Number	Rate (per 1000 pupils)	LA Rank	Number	Rate (per 1000 pupils)	LA Rank	Number	Rate (per 1000 pupils)	LA Rank	Number	Rate (per 1000 pupils)	LA Rank	Number	Rate (per 1000 pupils)	LA Rank
Caerphilly	216	17.2	#NA	191	15.7	19	296	24.5	22	219	18.2	#NA	198	16.5	#NA
Wales	1660	7.0		1612	8.3		1735	9.0		1698	8.9		#N/A	#N/A	



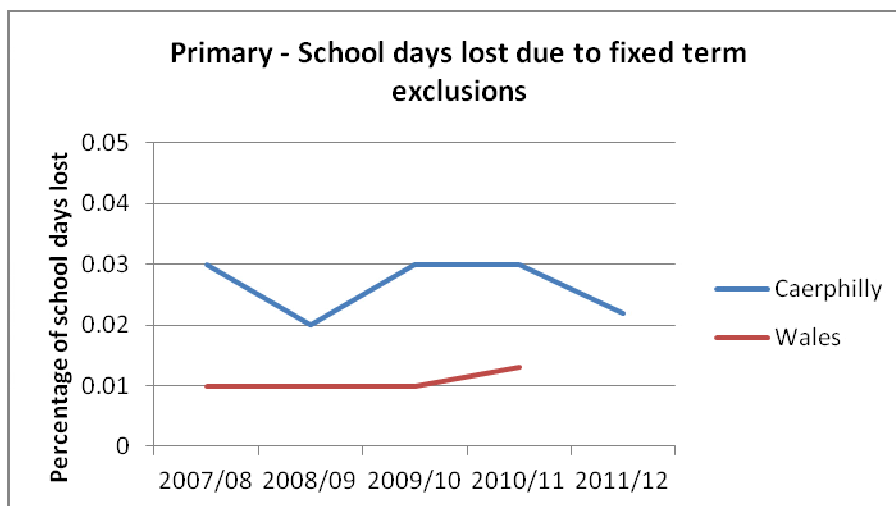
Fixed Term Exclusions of 6 days or more - Primary

	2007/08			2008/09			2009/10			2010/11			2011/12		
	Number	Rate (per 1000 pupils)	LA Rank	Number	Rate (per 1000 pupils)	LA Rank	Number	Rate (per 1000 pupils)	LA Rank	Number	Rate (per 1000 pupils)	LA Rank	Number	Rate (per 1000 pupils)	LA Rank
Caerphilly	24	1.9	#NA	18	1.5	20	25	2.1	22	32	2.7	#NA	7	0.6	#NA
Wales	169	0.7		163	0.8		157	0.8		172	0.9		#N/A	#N/A	



Percentage of Schools days lost due fixed term exclusions - Primary

	2007/08			2008/09			2009/10			2010/11			2011/12		
	Number	% school	LA Rank	Number	% school	LA Rank	Number	% school	LA Rank	Number	% school	LA Rank	Number	% school	LA Rank
Caerphilly	807.5	0.03	22	561.75	0.02	19	741.3	0.03	21	698	0.03	22	507.5	0.02	
Wales	5559.4	0.01		5134.5	0.01		4870	0.01		5150	0.013		#N/A	#N/A	

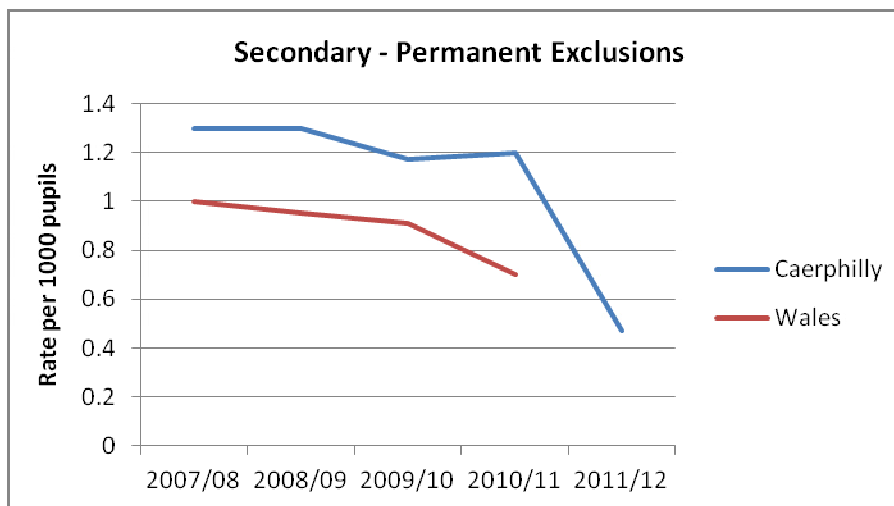


NB - Primary figures only include full time pupils aged 5 and Over

Secondary

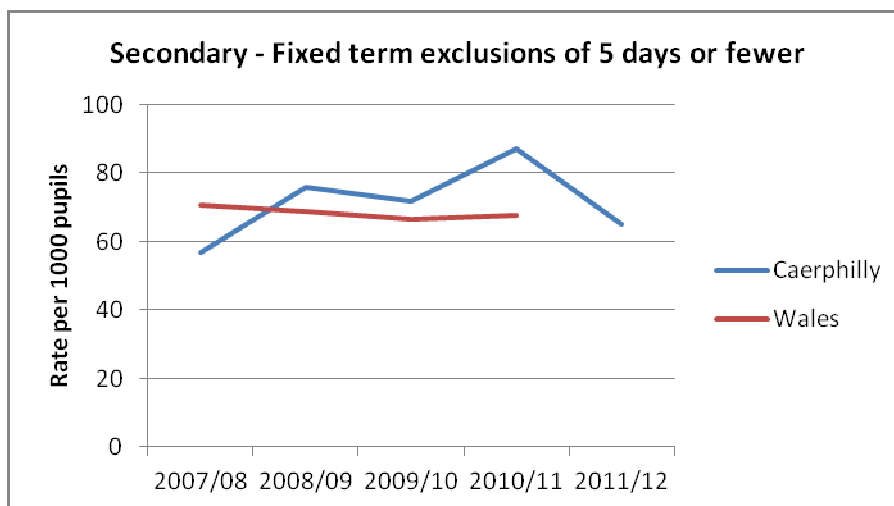
Permanent Exclusions - Secondary

	2007/08			2008/09			2009/10			2010/11			2011/12		
	Number	Rate (per 1000 pupils)	LA Rank	Number	Rate (per 1000 pupils)	LA Rank	Number	Rate (per 1000 pupils)	LA Rank	Number	Rate (per 1000 pupils)	LA Rank	Number	Rate (per 1000 pupils)	LA Rank
Caerphilly	16	1.3	16	16	1.3	16	13	1.2	17	13	1.2	17	5	0.47	
Wales	212	1.0		195	1.0		159	0.9		142	0.7		#N/A	#N/A	



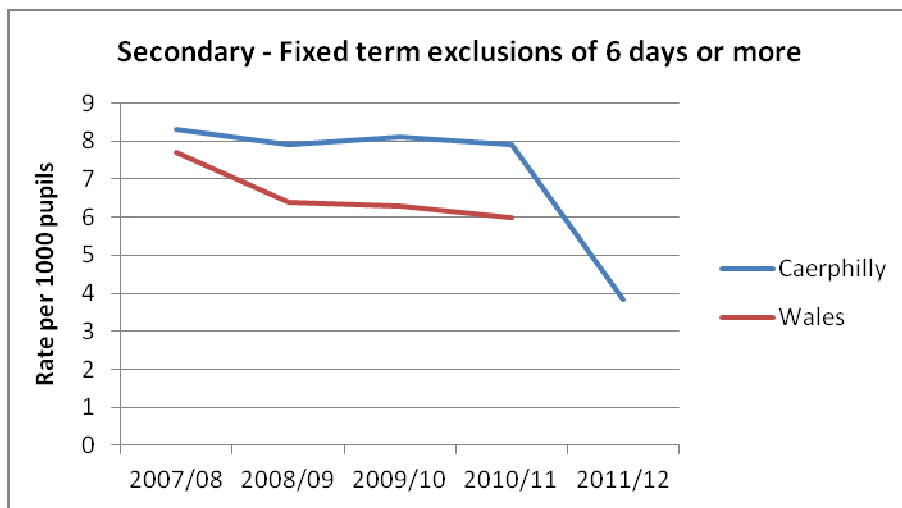
Fixed Term Exclusions of 5 days or fewer - Secondary

	2007/08			2008/09			2009/10			2010/11			2011/12		
	Number	Rate (per 1000 pupils)	LA Rank	Number	Rate (per 1000 pupils)	LA Rank	Number	Rate (per 1000 pupils)	LA Rank	Number	Rate (per 1000 pupils)	LA Rank	Number	Rate (per 1000 pupils)	LA Rank
Caerphilly	710	56.7	8	948	75.8	17	899	71.7	17	1074	87.0	18	694	65.0	
Wales	14598	70.5		14091	68.6		13549	66.4		13621	67.7		#N/A	#N/A	



Fixed Term Exclusions of 6 days or more - Secondary

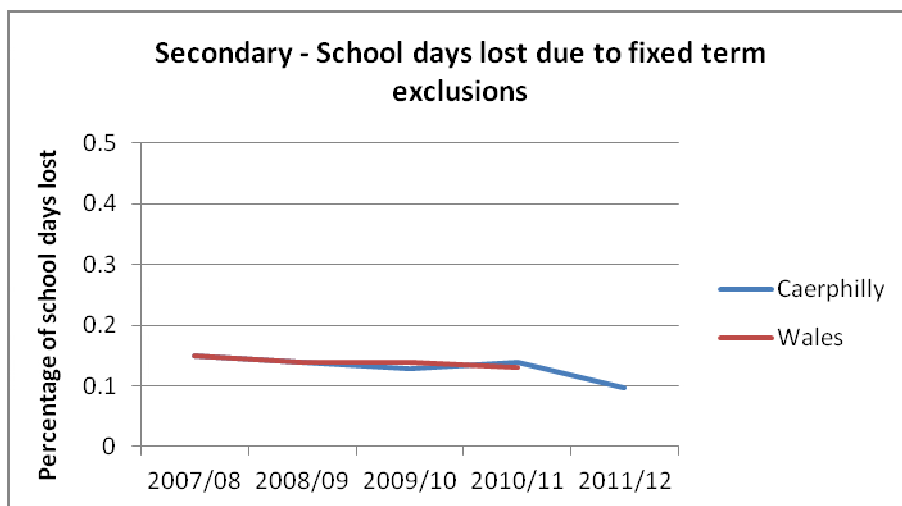
	2007/08			2008/09			2009/10			2010/11			2011/12		
	Number	Rate (per 1000 pupils)	LA Rank	Number	Rate (per 1000 pupils)	LA Rank	Number	Rate (per 1000 pupils)	LA Rank	Number	Rate (per 1000 pupils)	LA Rank	Number	Rate (per 1000 pupils)	LA Rank
Caerphilly	104	8.3	12	99	7.9	16	102	8.1	17	97	7.9	17	41	3.8	
Wales	1591	7.7		1324	6.4		1286	6.3		1200	6.0		#N/A	#N/A	



NB - The above figures are based on all exclusions including those in years 12 and 13

Percentage of Schools days lost due to fixed term exclusions - Secondary

	2007/08			2008/09			2009/10			2010/11			2011/12*		
	Number	% school days lost	LA Rank	Number	% school days lost	LA Rank	Number	% school days lost	LA Rank	Number	% school days lost	LA Rank	Number	% school days lost	LA Rank
Caerphilly	3491	0.15	12	3324	0.14	13	2631	0.13	12	2828.5	0.14	17	1947	0.10	
Wales	54028	0.15		47695	0.14		45965	0.14		43212	0.13		#N/A	#N/A	



NB - The figures in the above table are based on exclusions in years 7 to 11 only